

**RM OF SPRINGFIELD :
ZONING BY-LAW No. 08-01**

LEGEND:

- AI - AGRICULTURAL INTENSIVE ZONING DISTRICT
- AG - AGRICULTURAL GENERAL ZONING DISTRICT
- AG-1 - AGRICULTURAL GENERAL ZONING DISTRICT (SITE SPECIFIC)
- AR - AGRICULTURAL RESTRICTED ZONING DISTRICT (SITE SPECIFIC)
- OR - COMMERCIAL RECREATION ZONING DISTRICT
- OC - COMMERCIAL CENTRAL ZONING DISTRICT
- CH - COMMERCIAL HIGHWAY ZONING DISTRICT
- HA - HAMLET AREA ZONING DISTRICT
- MB - INDUSTRIAL BUSINESS ZONING DISTRICT
- MBI - INDUSTRIAL BUSINESS (SITE SPECIFIC)
- MG - INDUSTRIAL GENERAL ZONING DISTRICT
- MG-1 - INDUSTRIAL GENERAL (SITE SPECIFIC)
- MX - INDUSTRIAL EXTRACTIVE ZONING DISTRICT
- MXH - INDUSTRIAL EXTRACTIVE HOLDING ZONING DISTRICT
- RR - PARKS AND RECREATION ZONING DISTRICT
- I - INSTITUTIONAL ZONING DISTRICT
- RR - RURAL RESIDENTIAL ZONING DISTRICT
- RS - RESIDENTIAL SINGLE FAMILY ZONING DISTRICT
- RM - RESIDENTIAL MULTIPLE FAMILY ZONING DISTRICT
- RC - RESIDENTIAL COMPREHENSIVE ZONING DISTRICT
- RT - RESIDENTIAL TWO FAMILY ZONING DISTRICT
- DR - DEVELOPMENT RESERVE ZONING DISTRICT
- SNR - SENSITIVE AND NATURAL RESOURCE ZONING DISTRICT
- URBAN CENTRE HAMLET OR OTHER SETTLEMENT CENTRE URBAN LIMIT LINE
- MUNICIPAL BOUNDARY

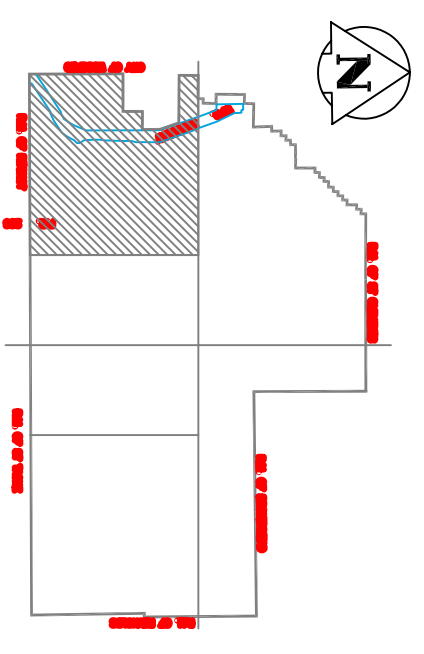


FIGURE 3