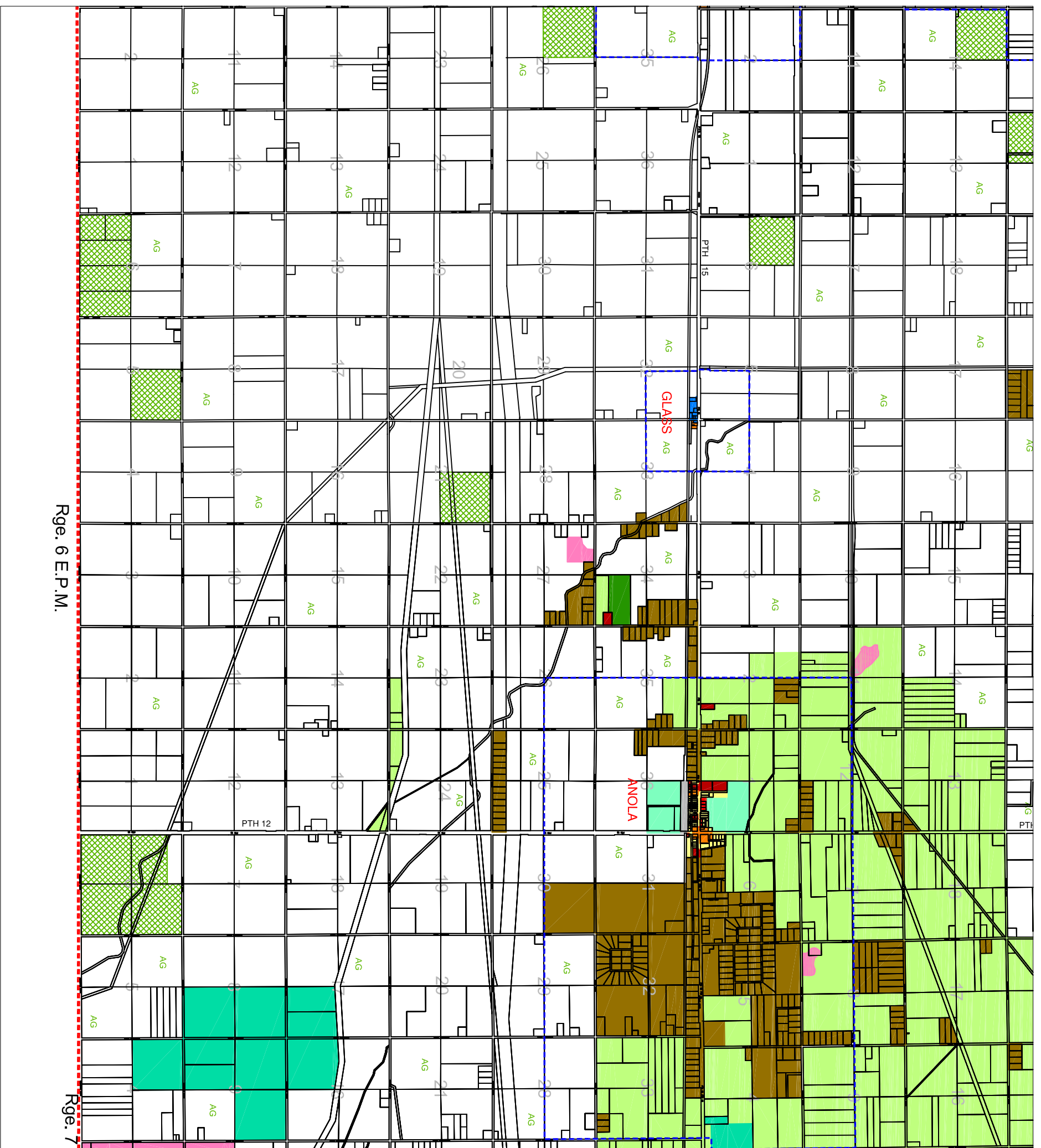


RM OF SPRINGFIELD : ZONING BY-LAW No. 08-01



LEGEND:

	AI - AGRICULTURAL INTENSIVE ZONING DISTRICT
	AG - AGRICULTURAL GENERAL ZONING DISTRICT
	AG-1 - AGRICULTURAL GENERAL ZONING DISTRICT (SITE SPECIFIC)
	AR - AGRICULTURAL RESTRICTED ZONING DISTRICT
	CR - COMMERCIAL RECREATION ZONING DISTRICT
	CC - COMMERCIAL CENTRAL ZONING DISTRICT
	CH - COMMERCIAL HIGHWAY ZONING DISTRICT
	HA - HAMLET AREA ZONING DISTRICT
	MB - INDUSTRIAL BUSINESS ZONING DISTRICT
	MB1 - INDUSTRIAL BUSINESS (SITE SPECIFIC)
	MG - INDUSTRIAL GENERAL ZONING DISTRICT
	MG-1 - INDUSTRIAL GENERAL (SITE SPECIFIC)
	MX - INDUSTRIAL EXTRACTIVE ZONING DISTRICT
	MXH - INDUSTRIAL EXTRACTIVE HOLDING ZONING DISTRICT
	PR - PARKS AND RECREATION ZONING DISTRICT
	I - INSTITUTIONAL ZONING DISTRICT
	RR - RURAL RESIDENTIAL ZONING DISTRICT
	RS - RESIDENTIAL SINGLE FAMILY ZONING DISTRICT
	RM - RESIDENTIAL MULTIPLE FAMILY ZONING DISTRICT
	RC - RESIDENTIAL COMPREHENSIVE ZONING DISTRICT
	RTI - RESIDENTIAL TWO FAMILY ZONING DISTRICT
	DR - DEVELOPMENT RESERVE ZONING DISTRICT
	SNR - SENSITIVE AND NATURAL RESOURCE ZONING DISTRICT

URBAN CENTRE, HAMLET OR OTHER SETTLEMENT CENTRE URBAN LIMIT LINE
 MUNICIPAL BOUNDARY

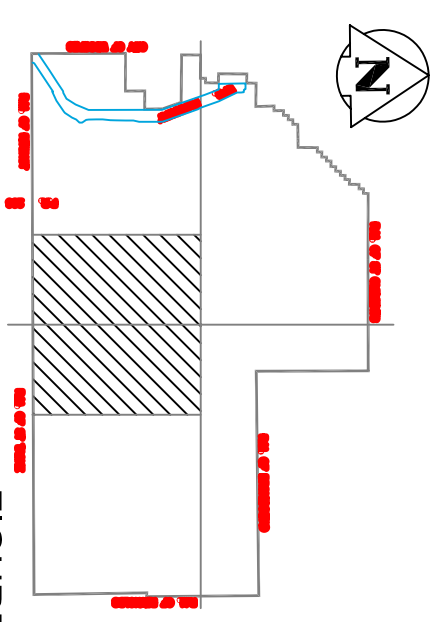


FIGURE 4